

07-17  
AUGUST



# THE WORLD GAMES 2025 CHENGDU

---

## Sport Climbing Technical Handbook

---



# CONTENTS

<b>1 CONTACTS .....</b>	<b>2</b>
1.1 Contact Details .....	2
1.2 TWG 2025 Chengdu.....	2
1.3 International Federation of Sport Climbing .....	3
<b>2 GENERAL INFORMATION .....</b>	<b>5</b>
2.1 Province and City .....	5
2.2 Key Facts and Figures .....	10
<b>3 SERVICE INFORMATION.....</b>	<b>14</b>
3.1 Arrival and Departure .....	14
3.2 Accreditation .....	15
3.3 Accommodation.....	16
3.4 Catering Services.....	17
3.5 Transport.....	18
3.6 Insurance .....	19
3.7 Medical Services .....	21
3.8 Anti-Doping.....	21
<b>4 COMPETITION INFORMATION.....</b>	<b>24</b>
4.1 Competition Format .....	24
4.2 Competition Rules and Regulations .....	27
4.3 Technical Meeting and Competition Schedule.....	40
4.4 Training Schedule.....	43
4.5 Equipment and Uniforms .....	43
4.6 Participating Athletes/Teams .....	43



<b>5 VENUE MAP .....</b>	<b>45</b>
5.1 Venue Information .....	45
<b>6 ANNEX .....</b>	<b>52</b>
6.1 Location of Venues .....	52
6.2 Overall Competition Schedule .....	54
6.3 Sponsors .....	55



# THE WORLD GAMES 2025 CHENGDU

# 1 CONTACTS

## 1.1 Contact Details

- Competition Services  
competition@theworldgames2025.com
- Participant Services  
participantservices@theworldgames2025.com
- Volunteers  
zhengyun@theworldgames2025.com
- Opening & Closing Ceremonies  
occ@theworldgames2025.com
- Customs and Logistics  
pengtao@theworldgames2025.com
- Sport Manager:  
Qin Hao Email: qinhao@theworldgames2025.com

## 1.2 TWG 2025 Chengdu

Presidents of TWG 2025 Chengdu LOC:  
GAO Zhidan, SHI Xiaolin  
President of Chengdu ExCo: WANG Fengchao  
Address: Tianfu International Financial Centre, No. 966, North  
Section, Tianfu Avenue, Chengdu

E-mail: officialmedia@theworldgames2025.com  
Website: <https://www.theworldgames2025.com>  
Postcode: 610095



Instagram  
twg2025



Facebook  
The World Games 2025



X  
twg2025



TikTok  
twg2025



Official website  
[www.theworldgames2025.com](http://www.theworldgames2025.com)

## 1.3 International Federation of Sport Climbing

IFSC Officials  
President: Marco Sclaris  
Event Delegate: Hazel Han (KOR)  
Jury President: Karalyn Aronow (USA)  
Judge: Ahmed Zulazfar Khan Bin Abdul Aziz (SGP)  
Address: Corso Vinzaglio 12, 10121 Torino, Italy  
Office email: office@ifsc-climbing.org  
Phone: +39 011 385 39 95  
Website: <http://www.ifsc-climbing.org/>

Sport Climbing IF:  
Hazel HAN  
E-mail: [hazel.han@ifsc-climbing.org](mailto:hazel.han@ifsc-climbing.org)  
Phone: +39 333 326 6309

# THE WORLD GAMES 2025 CHENGDU

## 2 GENERAL INFORMATION

### 2.1 Province and City

#### 2.1.1 Sichuan Province

Situated in southwest China and on the upper reaches of the Yangtze River, Sichuan is renowned as the “Land of Abundance”. It covers an area of 486,000 square kilometres and borders with seven provinces (including autonomous regions and municipalities directly under the central government), namely, Chongqing, Guizhou, Yunnan, Xizang, Qinghai, Gansu, and Shaanxi. The province has a permanent resident population of over 83 million.

Boasting a long history, Sichuan is the cradle of ancient Shu civilisation, and the place where “Jiaozi”, the earliest banknote in the world, was born. Shu Brocade and Sichuan Shadow Play have been included in UNESCO’s list of intangible cultural heritage. In particular, the sites of Sanxingdui Site and Jinsha Site epitomise the resplendent and mysterious civilisation of ancient Sichuan.

The province also abounds in tourism resources. Among the 26 global tourism resources and brands, there are 3 World Natural Heritage Sites including Jiuzhaigou Valley, Huanglong Scenic and Historic Interest Area and Sichuan Giant Panda Sanctu-

aries, 1 World Cultural Heritage Site (Mount Qingcheng and the Dujiangyan Irrigation System), and 1 World Cultural and Natural Heritage Site (Mount Emei and Leshan Giant Buddha Scenic Area).

Sichuan is active in external exchanges. As of December 2024, it has established friendly relations with 500 provinces/states in 87 countries/regions, and economic and trade relations with over 200 countries/regions. A total of 381 Fortune Global 500 Enterprises have operated in Sichuan. Chengdu, the capital of Sichuan Province, is among the Chinese cities offering a 240-hour visa-free transit policy for travellers from 54 countries.

## 2.1.2 Chengdu

### 2.1.2.1 Basic information

Chengdu is the hometown of the Giant Pandas and enjoys over 4,500 years of civilisation history and more than 2,300 years of history as a city, manifesting a perfect mixture of history, culture and modernity. Being the capital of Sichuan Province and a central city in southwest China, Chengdu covers an area of 14,300 square kilometres and has a permanent population of 21.4 million, which has turned it into a megacity known to the world. It is also an important centre of economy, science and technology, finance, cultural creativity, and international exchanges in China, and an international hub for comprehensive transportation and communications.

Today's Chengdu values opening up with global vision. In total, 23 countries have been approved to establish consulates in Chengdu. And the city has established sister-city and friendship city relations with 113 cities around the world, and trade relations with 235 countries/regions worldwide. Chengdu is the third city having two international airports on the Chinese mainland, following Shanghai and Beijing, and the 19th

city with two 4F airports in the world. In 2024, the passenger throughput exceeded 87 million. As of December 2024, it has opened 73 regular international and regional flight routes, covering both passenger and freight services. In addition, it is linked to 118 overseas cities through its international freight train services.

Chengdu has been awarded as the City of Gastronomy by UNESCO for its world-renowned Sichuan cuisine, great variety of delicious street food, and tasty spicy hot pot. It is also selected by UNWTO as China's Best Tourist City. Tianfu culture, the bedrock of Chengdu's city culture, has been nourishing the people and the city with the spirits of valuing innovation, creativity, elegance, fashion, optimism, inclusiveness, friendship, and public welfare. Chengdu has successfully held the Chengdu FISU World University Games, the Thomas & Uber Cup Finals 2024, among other major international events. Culture and sports have become the two focal points as Chengdu is going global in a more open and confident manner.

## 2.1.3 Geography and Climate

### 2.1.3.1 Climate

Located in Sichuan Basin, Chengdu has a monsoon-influenced humid subtropical climate characterised by mild weather with no extreme heat in summer, rare ice and snow in winter, plenty of precipitation in autumn and at night, and low-speed winds and high relative humidity. On average annually, the city has a temperature of 16.7°C, a precipitation of 948.6mm, and humidity of 80%.

Table 1 Temperature (°C)

Year		Aug.
2020	Average	25.3
	High	37.5
	Low	16.7

Year		Aug.
2021	Average	25.3
	High	38.6
	Low	16.7
2022	Average	29.4
	High	43.4
	Low	18.8
2023	Average	26.0
	High	37.5
	Low	17.5
2024	Average	28.7
	High	41.3
	Low	17.9
Year-round	Average	25.5
	High	43.4
	Low	13.4

Table 2: Precipitation (mm)

Year	Aug.
2020	695.1
2021	258.8
2022	133.2
2023	201.1
2024	118.9
Year-round	229.4

### 2.1.3.2 Weather in August

TWG 2025 Chengdu will be held during the height of summer in Chengdu, the period featuring the highest temperature, most precipitation, and most severe convective weather in the year.

During this period, there may be major meteorological disasters with great impacts, including high temperature, rainstorm, strong wind, hail, thunderstorm, as well as secondary disasters such as mountain torrents, floods in small and medium-sized rivers, geological disasters, and urban water logging caused by heavy rainfall.

Chengdu is relatively hot from early-August to mid-August, with abundant precipitation and high humidity. This period sees few haze, high visibility, relatively low average wind speeds, and occasional convective weather.

#### a. Temperature

During this period, the average temperature is 25.8°C, and the difference between day and night is about 8.5°C. The temperature usually remains stable, with the highest daytime temperature ranging from 31°C to 39°C. The average number of days with temperatures exceeding 35°C is 2, while the maximum is 16 (2022 and 2024).

#### b. Precipitation and humidity

Chengdu receives abundant rainfall during this period, mostly at night while only a little in the daytime that lasts only one to three hours. The average precipitation is 164.3 mm. It is expected that heavy rains severely impacting the competition will not occur frequently. The humidity ranges from 48% to 100%, with 82.4% on average.

#### c. Wind

This period is often wind-free or sees low-speed winds, with an average wind speed of 1.2 m/s. Northerly wind or northeasterly wind prevails, with the lowest wind speeds occurring from 00:00 to 08:00. Winds gather speed at noon and slow down in the evening. Convective gusts occur occasionally for a very short duration, usually within 30 minutes.

#### d. Visibility

During this period, the visibility is relatively high and there is little fog. The horizontal visibility ranges from 2.6 km to 28.2 km, with an average of 20.8 km.

#### 2.1.4 Other Information

Time zone: UTC+8

Voltage: 220V/50HZ

Currency: Renminbi (Chinese Yuan, CNY). Foreign currency-CNY exchange available at most banks in China.

## 2.2 Key Facts and Figures

### 2.2.1 Date

Date: 7 August to 17 August 2025

City: Chengdu, Sichuan Province, China

### 2.2.2 Sport Programmes

Competition Programmes: The World Games 2025 Chengdu will consist of 34 sports and 61 disciplines.

Competition Venues: The World Games 2025 Chengdu will be held in 8 venue clusters with a total of 27 venues (fields) for competition games.

### 2.2.3 Opening and Closing Ceremonies

Opening Ceremony:

Date: Thursday 7 August 2025

Venue: Tianfu Roof, Tianfu International Convention Centre, Sichuan Tianfu New Area.

Closing Ceremony:

Date: Sunday 17 August 2025

Venue: Chengdu International Friendship Pavilion, Chengdu

World Horticultural Expo Park, Chengdu Eastern New Area.

### 2.2.4 Activities to be held at TWG Plaza

TWG Plaza is located in the Main Venue of the International Horticultural Exhibition 2024 Chengdu and will be open from 8 to 17 August 2025.

Table 3

Activities		
Area	Time	Main Activities
Stage Area	18:00-19:00	[Sports demonstration] IF sports
	19:00-19:45	[Stage Performance Warm-up] TWG promotional videos, broadcast/playback of TWG, programme preview, etc.
	19:45-20:00	Athlete of the Day Awarding Ceremony
	20:00-21:30	[Fun in TWG Plaza] Themed performance + Pop music live show.
	21:30-22:00	[Venue Closing] End of all activities; ushering-out of spectators; venue closing
Host City Cultural Display Area	18:00-21:30	Tea culture experience and intangible cultural heritage exhibition and experience (only static exhibition before 18:00 due to hot weather)
Catering Area	18:00-21:30	Delicacies and specialties
Sponsor and Licensed Product Store Area	18:00-21:30	TWG 2025 Chengdu licensed products sales and interactive activities with sponsors (only static exhibition before 18:00 due to hot weather)
Urban Technology-based Innovation Achievements Exhibition Area	18:00-21:30	Static exhibition of and introduction to technological products (only static exhibition before 18:00 due to hot weather)

### 2.2.5 Sports Garden and Display Programme

Sports Garden is the venue to implement the Display Programme. It will set up 10 exhibition booths, and experience areas for 4 individual sports. The actual number of sports for demonstration will be subject to final confirmation.

Activities Plan:

1. Stage Area: 18:00-19:00, sports demonstration
2. Sports Garden Exhibition Area: Considering the hot weather, static displays will be held before 18:00, while sports demonstration and experience will be held from 18:00 to 20:00.  
(Chengdu ExCo might adjust the timelines according to major activities organised in this area.)



THE  
WORLD  
GAMES  
2025  
CHENGDU

## 3 SERVICE INFORMATION

### 3.1 Arrival and Departure

#### 3.1.1 Official AND Services Period

3-18 August 2025

#### 3.1.2 Official Port of Entry

Chengdu Tianfu International Airport (TFU)

#### 3.1.3 Official Points of Arrival and Departure

Chengdu Tianfu International Airport (for international & domestic AND)

Chengdu Shuangliu International Airport (for domestic AND)

Chengdudong Railway Station (for domestic AND)

#### 3.1.4 Detail

24-hour arrival/departure services at Tianfu Airport, Shuangliu Airport, and Chengdudong Railway Station. Service desks and dedicated drop-off/pick-up points will be established.

International Flights (Tianfu Airport): Arrival: Dedicated or priority customs and immigration channels. Departure: Dedicated check-in counters and dedicated or priority customs, immigration, and security channels.

Domestic Flights (Tianfu/Shuangliu Airports): Priority check-in counters and security channels.

Chengdudong Railway Station: Signage/staff guidance to dedicated drop-off/pick-up areas.

#### 3.1.5 Customs Clearance Services and Tips

Chengdu ExCo will provide a range of services to facilitate customs clearance for participants' supplies and equipment. We will set up a customs clearance service team, recommend professional customs clearance service providers for selection, and offer necessary tariff guarantee services for temporarily imported supplies and equipment. Participants are required to fill in the information about supplies and equipment on the Chengdu 2025 APP no later than three months prior to TWG 2025 Chengdu. For the specific procedures on transporting TWG-related supplies and equipment to Chengdu, please refer to the Customs Clearance Service Guide issued by the Chengdu ExCo (<https://www.theworldgames2025.com/activity/fisu?lang=zh&cid=delegation>). For media carrying the reporting and photographic equipment as carry-on luggage when entering China, ATA Carnet is recommended for the customs clearance.

### 3.2 Accreditation

Refer to the Accreditation section in the Bulletin for accreditation particulars.



## 3.3 Accommodation

### 3.3.1 Accommodation Arrangement for Athletes of 34 Sports

The TWG Village will commence operation and provide services at 00:00 on August 3, 2025, and cease operation and terminate service at 24:00 on August 18, 2025. No services will be provided before 00:00 on August 3, 2025 and after 24:00 on August 18, 2025.

#### 3.3.1.1 Accommodation Allotment Plan by Sports

Sport Climbing will be assigned accommodation in TWG Village Zone A.

#### 3.3.1.2 TWG Village Locations

##### - TWG Village Zone A

IF Commitment and Extra Officials will settle in TWG Village Zone A, Tianfu International Hotel Complex, No. 99, Bayue Road, Chengdu Eastern New Area.

IF Competition Manager is responsible for allocating accommodation for participants. For specific check-in areas, please contact the Competition Manager.

##### - TWG Village Zone B

IF Commitment and some of the Extra Officials settle in Zone B of the TWG Village, namely Holiday Inn Chengdu Century City, located at No. 208, Shijicheng Road, High-Tech Zone.

When Zone B of TWG Village is fully occupied, some officials will be arranged to stay at Luxury Blue Horizon Hotel Chengdu, located at No. 166, Mingdu Road, High - tech Zone.

IF Competition Manager is responsible for allocating accommodation for participants. For specific check-in areas, please contact the Competition Manager.

## 3.4 Catering Services

### 3.4.1 Athletes and Officials

Complimentary buffet meals will be available in TWG Village throughout its operational period. Only breakfast is available on the departure day.

Provisional meal service schedule:

Table 4

Dates	Breakfast	Lunch	Dinner
3-6 August	06:00-09:00	11:00-14:00	18:00-21:00
7-17 August	06:00-09:00	11:00-14:00	18:00-23:00
18 August	06:00-09:00	N/A	N/A

#### 3.4.1.1

For sports requiring provision of meals before 06:00 or after 23:00 due to time constraints to meet competition schedules, competition managers or representatives of relevant sports may book such a service 24 hours in advance at the Athlete Dining Hall service counter, specifying headcount and timing. Meals will be provided accordingly.

#### 3.4.1.2

Complimentary refreshments and drinking water will be provided at competition venues per competition schedule. Instant noodles and RTE meat products will be provided for those unable to return to TWG Village for meals due to time constraints to meet competition schedule. Complimentary drinking water will be provided at competition venues as per training schedule.

#### 3.4.1.3

During Athletes' Night, a complimentary buffet will be pro-

vided. The menu will include sandwiches, RTE meat products, bread, pastries, juices, and other energy-packed foods.

#### 3.4.1.4

Complementary meal bags and drinking water will be provided for athletes and officials attending the opening and closing ceremonies.

## 3.5 Transport

### 3.5.1 Service Hours and Scope

The dedicated transport service for TWG 2025 Chengdu shall operate from 3 to 18 August 2025 (16 days). Services include arrival and departure transport, Opening and Closing Ceremonies transport, competition and training transport, and official events transport.

### 3.5.2 Competition and Training Transport

Scheduled shuttle services (in principle coaches) will be provided between TWG Village Zone A / Zone B and competition venues based on the pre-determined competition and training schedules. For athletes requiring accessible transportation, scheduled accessible shuttle services will be provided.

**Athletes' Training Shuttles:** Arrive at the venue 30 minutes before the training and depart within 30 minutes after the training.

**Athletes' Competition Shuttles:** The shuttle schedule will be based on the competition schedule for different sports. In principle the first shuttle arrives 2 hours before the competition; the last shuttle departs 2 hours after the competition. Back-up vehicles will be provided for those who miss shuttles due to doping control test, interviews and other unforeseen circumstances.

**Technical Officials' Shuttles:** The shuttle schedule will be based on the competition schedule for different sports. The first shuttle

arrives at the venue 1.5 to 2 hours before the competition, and the last shuttle departs 2 hours after the competition.

### 3.5.3 Official Events Transport

Scheduled shuttle services (coaches) will be provided between TWG Village Zone A / Zone B and TWG Plaza for participants to take part in activities held in TWG Plaza and Athletes' Night.

### 3.5.4 Other Transportation Services

Vehicle rental information and complimentary public transportation will be provided during the Games.

## 3.6 Insurance

### 3.6.1 Minimum Medical Insurance Coverage Required for Participants

All delegations, including, but not limited to, all IWGA participants, are required to have the following personal health and accident insurance coverage during the Games time:

Table 5

Item	Minimum Coverage (CNY)
Accidental Death and Disability	1,000,000
Accidental Medical Expenses	1,000,000
Death from Infectious Disease	500,000
Death from Acute Illness	500,000
Medical Expenses for Acute Illness	1,000,000
Coverage for Hospitalisation Expenses	Insurance must cover hospitalisation expenses.

### 3.6.2

#### Cost of Insurance for Participants Without or With Insufficient Insurance Upon Arrival

Chengdu ExCo offers the following insurance options for participants upon arrival in Chengdu: accidental death/disability insurance (CNY 1,000,000), accidental injury medical insurance (CNY 1,000,000), acute illness death insurance (CNY 500,000), acute illness medical insurance (CNY 1,000,000), and emergency repatriation insurance (CNY 1,000,000). The premium is CNY 280 per person per day. Discounts apply based on coverage duration (see detailed pricing below). Insurance consultations and sales are available at the Participant Services Centre in TWG Village.



**12th World Games 2025 Participant Insurance**

**Personal Accident Insurance**

All participants must hold valid medical insurance to obtain accreditation. You can purchase the exclusive Chengdu World Games insurance plan from PICC Property and Casualty Company Limited here. The insurance cost depends on the number of days covered, and you may select the coverage duration based on your itinerary. A language toggle for Chinese/English switching is available at the bottom of the page.

**Insurance Product Overview**

		1 DAY	7 DAYS	14 DAYS	30 DAYS
Accidental Death and Dismemberment	RMB 1 million				
Accidental Injury	RMB 1 million				
Death resulting from Acute Diseases	RMB 500,000				
Sudden Acute Illness	RMB 1 million	RMB 280	RMB 1,720	RMB 3,210	RMB 5,880
Emergency Evacuation/Repatriation	RMB 1 million				
Deductible	None				

Apply Now  
Learn More

Language/语言 Chinese/中文 English/英文

Figure 1

## 3.7 Medical Services

Chengdu ExCo will offer complimentary on-site medical treatment and emergency medical transfer services to all accredited participants during the Games.

## 3.8 Anti-Doping

### 3.8.1 Doping Control

The IWGA is committed to delivering a world-class anti-doping programme during TWG 2025 and has the authority to test athletes anytime and anywhere within the context of the Event. The IWGA has delegated the independent management of TWG 2025 anti-doping programme to the International Testing Agency (ITA). The China Anti-Doping Agency (CHINADA) will be responsible for the sample collection. Both urine and/or blood samples will be collected. All samples will be analyzed at the Sports Medicine Research & Testing WADA accredited laboratory in Beijing (CHINA). Please visit <https://theworld-games.org/> (Athletes & Clean Sport section) for more detailed information regarding the anti-doping programme (including but not limited to WADA Prohibited list 2025, testing procedures, anti-doping rule violations, Therapeutic Use Exemptions (TUE), REVEAL-whistleblowing platform. All athletes are encouraged to participate in education activities delivered by the ITA and CHINADA during Games time. The IWGA is committed to delivering a world-class anti-doping programme during TWG 2025 and has the authority to test athletes anytime and anywhere within the context of the Event. The IWGA has delegated the independent management of TWG 2025 anti-doping programme to the International Testing Agency (ITA). The China Anti-Doping Agency (CHINADA) will be responsible for

the sample collection. Both urine and/or blood samples will be collected. All samples will be analyzed at the Sports Medicine Research & Testing WADA accredited laboratory in Beijing (CHINA). Please visit <https://theworldgames.org/> (Athletes & Clean Sport section) for more detailed information regarding the anti-doping programme (including but not limited to WADA Prohibited list 2025, testing procedures, anti-doping rule violations, Therapeutic Use Exemptions (TUE), REVEAL-whistle-blowing platform. All athletes are encouraged to participate in education activities delivered by the ITA and CHINADA during Games time.

# THE WORLD GAMES 2025 CHENGDU

## 4 COMPETITION INFORMATION

(Update Notice: This version was last updated on 22 July 2025. For any subsequent questions, please refer to the competition format published on the official website of the relevant International Federation.)

### 4.1 Competition Format

#### 4.1.1 Discipline Explanation

1. Athletes compete on standardised, parallel routes, racing individually in pairs (in Speed Single), as four individuals (in Speed 4 Singles), or as two pairs (Speed Relay). Both men and women climb the same routes, which does not change from the qualification phase through to the finals.
2. The objective is to reach the top of a 15-meter wall, inclined at a 5-degree angle, as quickly as possible. Top male athletes typically achieve times between.
3. Each climber is secured by an automatic belay device at the top of the wall, with the lanyard attached to their harness for safety and landing.
4. A strong start is crucial in Speed, as athletes need a quick and

explosive start. Any movement with a reaction time less than 0.100s is considered a false start.

#### 4.1.2 Speed Single

This is the standard IFSC Speed format, featuring individual races on 2 lanes.

##### 1. Qualification

- 1) All 36 athletes in each gender, in a pair, may participate in the Qualification round (2 races).
- 2) After completing Qualification, the top sixteen (16) fastest athletes from the ranking will proceed to the Final (elimination) rounds.

##### 2. Finals

- 1) During the finals round, athletes compete one against the other in a series of elimination races (1/8 Final, Quarter-finals, Semi-finals, Small Final (Bronze), and Big Finals (Gold)).
- 2) The Big Final race awards the Gold and Silver medals, while the winner of the small-final race wins the Bronze medal.

#### 4.1.3 Speed Single 4

The Speed Single 4 event involves individual races on 4 lanes. The Qualification phase has two stages:

##### 1. Qualification - Seeding heats:

- 1) Each athlete competes in four races across four lanes (A-D) with approximately equal rest time between each race. After Seeding heats, athletes are ranked based on their fastest time.
- 2) The Top eight (8) athletes from the Qualification seeding heats advance directly to the Finals, while those ranked 9th to 24th proceed to the Qualification Elimination Heats for another chance to secure a Finals spot.

3) Athletes ranked below 25th from the Qualification are eliminated and do not advance to the next stage.

## 2. Qualification - Elimination heats:

1) 16 athletes (9th to 24th) are grouped into 4 races, with four athletes in each race.

2) The best two athletes in each race will progress to the Final. Two losers of each race will be automatically eliminated. Therefore, a total of 8 winners of the elimination heats progress to the Finals.

## 3. Finals

1) The Finals consist of a series of elimination races (Quarterfinals, Semifinals, and Final).

2) Athletes are paired up based on the Qualification Ranking. The two best athletes in each race progress to the next race. The Final race decides the top three (3) places (Gold, Silver, and Bronze).

3) The ranking of the losers is based on the best time achieved in the competition.

### 4.1.4 Speed Relay

The Relay event involves climbing in two pairs on four lanes.

#### 1. Qualification

1) Each team consists of two (2) competitors of the same gender. Each team has two races to record the fastest time. Each country is permitted to enter a maximum of two (2) teams.

2) The first athlete races on the left lane to touch the finishing pad, followed by the second athlete racing on the right lane.

#### 2. Finals

1) The top 16 teams from the Qualification will progress to the

Finals.

2) Athletes will play in the 1/8 Finals, followed by Quarterfinals, Semifinals, Small Final (Bronze), and Big Final (Gold).

## 4.2 Competition Rules and Regulations

The Sport Climbing competition will be held in accordance with the editions of the following documents that are in force at the time of the Games:

- IFSC rules and competition regulations: <https://www.ifsc-climbing.org/resources/competitions>

- IFSC disciplinary rules <https://www.ifsc-climbing.org/commissions/disciplinary>

The rules and relevant regulations must be read in conjunction with the accompanying notes and guidance as available on the IFSC website. In the event of any discrepancy between this Technical Handbook and the official rules published on the IFSC website, the version published on the IFSC website shall take precedence.

### 4.2.1 Relevant IFSC Rules

#### 4.2.1.1 Safety

A belayer will be assigned to each lane to ensure the safe exchange of the auto-belay between competitors and attempts.

#### 4.2.1.2 Competition Organization

Each competitor:

- a) must report to the warm-up area by the time stated on the Official Start List for the round.
- b) must start their attempt on each lane in the order set out on

the Official Start List.

c) will be entitled to a minimum time gap of not less than 5 minutes between the completion of one race and the start of their next race, other than where a race is re-run.

Each competitor starting a round will remain in the Competition Area:

- a) qualification round: until they have completed their races,
- b) final round: until eliminated from the round.

Route cleaning should take place after the practice period, and after the qualification round of each event.

A presentation of the finalists will take place before the semifinal heats of each event.

#### 4.2.1.3 Number and duration of attempts

A climber may make a single scoring attempt on a route in any scheduled heat.

A practice period may be organised before the start of the first round of the competition. This practice period may be time- or attempt-limited but any attempts made will not count as a scoring attempts.

A climber may be allowed to restart their attempt if a Technical Incident has occurred, or where a race was stopped following a False Start, or if required by the applicable competition regulations as a tie-break process.

An attempt is considered to have started when the force on the starting pad falls below the threshold required to trigger the timer. A start will be judged invalid (i.e., a False Start) if a climber's recorded Reaction Time is less than 0.100s and less than that of any other climber in the same race.

#### 4.2.1.4 The end of an attempt

An attempt in speed will be ruled successful if a climber stops the timer by striking the finishing pad with a hand.

#### 4.2.1.5 Determining the result of an attempt

The result of an unsuccessful attempt in speed will be recorded as a Fall or a False Start, depending on the cause. The result of a successful attempt in speed will be recorded as the climbing time.

#### 4.2.1.6 Technical Incidents

The on-field officials will determine whether any incident or unusual/unforeseen circumstance affecting a climber's attempt is classified as a Technical Incident.

If a competitor elects to continue an attempt after a potential or confirmed Technical Incident that adversely effected their attempt, the incident will be considered waived and closed for that competitor. A competitor may not waive an incident that provided an advantage.

If a Technical Incident is confirmed and cannot be waived or is not waived:

- a) the relevant attempt may be ruled unsuccessful at the point and time of the incident,
- b) the climber may be allowed to restart the route once the cause of the incident is rectified.
- c) the result of the attempt will be the better of the progress made before the incident and after any restart.

#### 4.2.1.7 Protests and Appeals

A competitor (or a team official acting on their behalf) may file an appeal if their result/ranking in an event is affected by:

- a) a judging error,
- b) an error in scorekeeping or timekeeping,
- c) some matter relating to the eligibility or conduct of a competitor or team official.

To be admissible, an appeal must be submitted to in writing to the Appeal Jury:

- a) by the competitor affected or a team official with Appeal Eligibility under the applicable competition regulations (the appel-

lant),

b) inside the time limits specified in the applicable competition regulations, and

c) must state the competitor affected, the substance of the appeal and the rule basis for the appeal.

If ruled inadmissible, the appeal form will be returned and marked as invalid. No appeal fee will be payable.

In examining an appeal, the Appeal Jury will have regard for and consider the spirit and intent of the rules and the need to uphold the integrity of the sport.

The Appeal Jury will consider the Admissible Evidence allowed under the applicable competition regulations. If this evidence:

a) is conclusive and supports the appeal, the appeal will be marked as successful and the decision on the Field of Play will be amended or the error otherwise corrected.

b) Is inconclusive or does not support the appeal, the appeal will be marked as unsuccessful and the decision on the Field of Play will stand.

All appeal decisions will be confirmed in writing and communicated to the appellant.

If the Admissible Evidence does not allow the matter under appeal to be reviewed, the decision made on the Field of Play will stand, and the appeal marked undetermined.

An appeal fee may only be charged if an appeal is unsuccessful.

A decision of the Appeal Jury will be considered as a Field of Play rule decision and is not subject to further review or appeal, other than as allowed under the IFSC Disciplinary Rules.

#### 4.2.1.8 Rules Infringements and Misconduct

##### Sanctions

Sanctions may be imposed for infringement of these rules and/or for misconduct as follow:

a) Caution:

- Breach of these rules without actual or potential serious impact on the fairness or results of competition

- Non-compliance with the instructions of an IFSC official

- Unsporting conduct of a minor nature.

- Use of obscene or abusive language or behaviour

b) Disqualification

- Breach of these rules with actual or potential serious impact on the fairness or results of competition.

- Unsporting conduct of a serious nature.

- Use of obscene or abusive language or behaviour of a serious nature.

- Receipt of two cautions in an event.

Sanctions may also be imposed as set out in any code given the status of a rule within any applicable competition regulations. The imposition of a sanction will be accompanied by showing a Yellow Card (for a caution) and/or a Red Card (for a disqualification).

#### 4.2.1.9 Consequences

A competitor in receipt of a caution may continue to participate in the event. A team official in receipt of a caution will not be allowed access to the Competition Area for the remainder of the event.

A competitor who is disqualified will be ineligible to participate in any subsequent rounds and will be unranked.

A competitor disqualified for a serious offence in any event will be disqualified for all events in the competition.

The Jury President may order the removal of any person infringing these rules or disrupting the competition and, if necessary, suspend any competition activities whilst this takes place.



## 4.2.2 Speed Single Regulations

### 4.2.2.1 Organization of attempts

Each competitor will report to the Call Zone for final preparation ahead of their attempt in the order set out in the Official Start List (or in the final, the pairing tree).

On entering the Field of Play, each competitor will go to the base of their route. Competitors will, without delay, position the starting pad as appropriate for their preferred starting position and, having done so, present themselves to their belayer. Competitors must remain on the ground during this preparation period.

The belayer will confirm that the competitor's harness is safe and connect the competitor's harness to the auto belay system. Once their harness is connected, each competitor will assume an assembly position not more than 2 meters in front of and facing away from the wall.

On the command "At your marks", each competitor will, without delay, take a position with both hands and one foot on their preferred starting holds, and one foot on the starting pad. The starter will order both competitors to return to the assembly position if following the command "At your marks" but prior to their announcing "Ready"

- a) the starter is not satisfied that the race can go ahead, or
- b) a competitor raises a hand to show that they are not ready to start.

Once all competitors are motionless in their starting positions, the starter will announce "Ready" and after this will initiate the timing system.

The race will be started with a clearly audible signal emitted by the timing system. The source of the signal should be as near possible equidistant to both competitors.

### 4.2.2.2 False Starts

If any competitor in a race records a Reaction Time of less than 0.100s, the starter will stop the race.

If both competitors in a race record an equal Reaction Time of less than 0.100s, the race will be re-run.

If one competitor in a race is determined to have made a False Start:

- a) qualification round: the other competitor may make an immediate re-run alone,
- b) final round: the other competitor will be the winner.

### 4.2.2.3 Scoring

The result of a scoring attempt will be recorded as either:

- a) the climbing time, where the competitor successfully completed the route,
- b) a False Start, in the relevant circumstances, or
- c) a Fall, where the attempt is unsuccessful for any reason other than a False Start.

The winner of a tournament bracket race will be:

- a) if one competitor makes a False Start or does not start, the other competitor,
- b) if no competitor makes a False Start, the competitor who successfully completes the route with the lower (or only) climbing time.

If both competitors in a tournament bracket race fall or record the same time, an additional race will run to break the tie. If following this the competitors remain tied, the winner will be determined by comparing their fastest time(s) from all scoring attempts within the event.

### 4.2.2.4 Timing

Measurement and recording

All times will be measured and recorded to the nearest 1/1000s.

Rounding for official times

Official times, including record times, will be rounded down to

the nearest 1/100s except where necessary to show an in-competition tie-break.

#### 4.2.2.5 Ranking

##### Qualification

Competitors who do not start at least one route in the round will be unranked and marked DNS in the round. Competitors starting at least one route will be ranked in the following order:

a) first: any competitors who have not made a False Start in ascending order of their best recorded time. If multiple competitors have the same best recorded time, their relative ranking will be by similar comparison of their second result placing competitors with a second time ahead of any without.

b) second: any competitors who recorded a Fall on both routes

c) third: any competitors who made a False Start, ranked relative to each other by comparison of their second result.

##### Final

Competitors who do not start their first scheduled race will be unranked and marked DNS in the round. Competitors starting the round will be ranked in order of the last stage completed and their placing within that stage:

a) first: the race winners in the stage,

b) second: any race losers in the stage,

in each case in order of their fastest time(s) from all scoring attempts within the event.

#### 4.2.2.6 Sporting and Technical Incidents

If a competitor, team official, belayer, or on-field official believes that some event has occurred which may be (or may cause) a Technical Incident, they must immediately report the matter to the Jury President who will decide whether to confirm a Technical Incident. No potential Technical Incident may be claimed after the “At Your Marks” command has been given in the next scheduled heat.

A claim for a Technical Incident in relation to the performance of the auto-belay or timing system may be made only in relation to some clear or systematic error.

Where a Technical Incident is confirmed, only the competitor(s) directly affected by the incident will be re-run.

#### 4.2.2.7 Appeals

No appeal may be made in relation to the validity of a Reaction Time, or any individual case where a competitor does not stop the timer where an IFSC-recognised timing system is in use.

Notice of an intention to appeal the scoring of a competitor’s attempt in any heat must be made prior to the start of the next heat. This notice may be made verbally, and the appellant will be allowed up to 5 minutes to submit a written appeal.

### 4.2.3 Speed Single 4 and Speed Relay regulations

Refer to the Addendum to the IFSC 2025 Rules and Competition Regulations for Speed 4 and Speed Relay specifics at <https://www.ifsc-climbing.org/resources/competitions>

### 4.2.4 Glossary of Terms

Table 6

Sport Climbing Glossary
Basics
Sport Climbing
Speed
Speed 4
Speed Relay
International Federation of Sport Climbing(IFSC)
International Licence
Member Federation

Sport Climbing Glossary
Climbing World Cup
World Ranking
Championships
Continental Records
World Records
Olympic Records
Athletes and Team
Athletes
International Licence
Extra Team Officials
Team Member
Rules
Speed Licence Rules
Event Period
Official Start List
Attempt
Reaction Time
Valid Time
Starting Pad
Finishing Pad
Starting holds
False Starts
Fall

Sport Climbing Glossary
Starting Signal
At your marks
Ready
Stop
Original Decision
Provisional Results
Official Results
Valid Results Mark /VRM
Did Not Start/DNS
Yellow Card warnings
Disqualified/DSQ
Disqualified for Behaviour/DQB
Invalid Results Mark/IRM
Seeding
Ranking
Random Order
Technical Incident
Valid Appeal
Appeal Fee
Qualification Round
Qualification Seeding Heats
Qualification Elimination Heats
Final Round
Elimination

Sport Climbing Glossary
Small Final
Big Final
The Field and Equipment
Call Zone
Competition Area
Transit Zone
Warm-up Area
Speed Wall
Warm-up Wall
Stage
Automatic Belay Devices (Speed)
Climbing Harness
Climbing Holds
Climbing Rope
Climbing Structures
Climbing Shoes
Chalk
Screws
Climbing Helmet

Sport Climbing Glossary
Karabiners
Quickdraw/ Tape Slings
Quickdraw/ Connector (Quick link)
Climbing Surface
Protection Point
Bolts
Aerial Lifts
Wall maintenance
Speed Automatic Timing System
Indicator (Timing System)
Display (Timing System)
Sub-mat/crash pad
Officials and Referees
IFSC Official
Event Delegate
International Technical Official (ITO)
National Technical Official (NTO)
Jury President
Judge

Sport Climbing Glossary
Routesetter
Belay (Clipper)
Starter (Speed)
Miscellaneous
Alphanumeric Bib
Category
Discipline
Local Organizing Committee

## 4.3 Technical Meeting and Competition Schedule

### 4.3.1 Technical Meeting Schedule

Table 7

Date	Time	Programme	Location
2025/8/13	09:00-12:00	Confirmation of Attendance	Competition Venue (During FOP Training)
	18:30-19:00	Confirmation of Athlete's Attendance	TWG Village-Tianfu International Hotel Complex
	19:00-20:00	Technical Meeting (IFSC officials, team officials, LOC competition staff)	

### 4.3.2 Competition Schedule

The general competition schedule for Sport Climbing is: August 14-16, 2025.

Table 8

Date	Time	Programme	Location
2025/8/14	7:30	Warm-up opening for Speed Single Qualifications	Competition Venue
	9:15	Warm-up closing for Speed Single Qualifications	
	9:30	Men and Women Speed Practice on 4-lanes	
	10:45-11:40	Men's Speed Single Qualification	
	11:45-12:40	Women's Speed Single Qualification	
	12:45 (estimated)	End of morning session	
	15:30	Warm-up opening for Speed Single Finals	
	16:30	Warm-up closing for Speed Single Finals	
	17:30-18:35	Men's and Women's Speed Single Finals	
	18:43-18:51	Men's Award Ceremony for Speed Single	
	18:51-18:59	Women's Award Ceremony for Speed Single	
2025/8/15	19:00 (estimated)	End of afternoon session	Competition Venue
		Followed by Press Conference	
	8:00	Warm-up opening for Speed Single 4 Qualifications	
	9:00	Warm-up closing for Speed Single 4 Qualifications	
	10:00-11:05	Women's Speed Single 4 Qualification – Seeding Heats	
	11:10-12:15	Men's Speed Single 4 Qualification – Seeding Heats	

Date	Time	Programme	Location
2025/8/15	12:30-12:50	Women's and Men's Speed Single 4 Qualification – Elimination Heats	Competition Venue
	12:55 (estimated)	End of morning session	
	16:00	Warm-up opening for Speed Single 4 Finals	
	17:00	Warm-up closing for Speed Single 4 Finals	
	18:00-18:35	Men's and Women's Speed Single 4 Finals	
	18:45-18:50	Women's Award Ceremony for Speed Single 4	
	18:50-18:55	Men's Award Ceremony for Speed Single 4	
	19:00 (estimated)	End of afternoon session	
2025/8/16		Followed by Press Conference	Competition Venue
	8:00	Warm-up opening for Speed Relay Qualifications	
	9:00	Warm-up closing for Speed Relay Qualifications	
	10:00-10:37	Men's Speed Relay Qualification	
	10:43-11:20	Women's Speed Relay Qualification	
	11:40-12:55	Women's and Men's Speed Relay Finals	
		Followed by Medal Ceremony	
	13:05-13:13	Men's Award Ceremony for Speed Relay	
2025/8/16	13:13-13:21	Women's Award Ceremony for Speed Relay	Competition Venue
	13:20 (estimated)	End of morning session	
		Followed by Press Conference	

## 4.4 Training Schedule

Table 9

Date	Time	Programme	Location
2025/8/13	09:00	Warm-up opening for FOP Training	Competition Venue
	09:00-13:00	FOP Training – competition venue (11:30 – 13:00 Team Relay training)	
	09:00-12:00	Confirmation of Attendance Location – Competition Venue (During FOP Training)	
	13:30	Warm-up closing for FOP Training	

## 4.5 Equipment and Uniforms

All participating athletes and teams are required to wear the IFSC-approved uniform wear the IFSC-approved uniform for The World Games 2025.

## 4.6 Participating Athletes/Teams

1.Men:

- 1) 36 in Speed Single Men
- 2) Speed Relay 36 Athletes in 18 teams Men
- 3) 36 in Speed Single 4 Men

2.Women:

- 1) 36 in Speed Single Women
- 2) Speed Relay 36 Athletes in 18 teams Women
- 3) 36 in Speed Single 4 Women

# THE WORLD GAMES 2025 CHENGDU

## 5 VENUE MAP

(Update Notice: Due to the continuous updating of the venue map, this version was last updated on 09 July 2025 . For subsequent reference, please refer to the SWORD VENUE.)

### 5.1 Venue Information

The Field of Play is equipped with a 4-lane Speed wall oriented to the north.

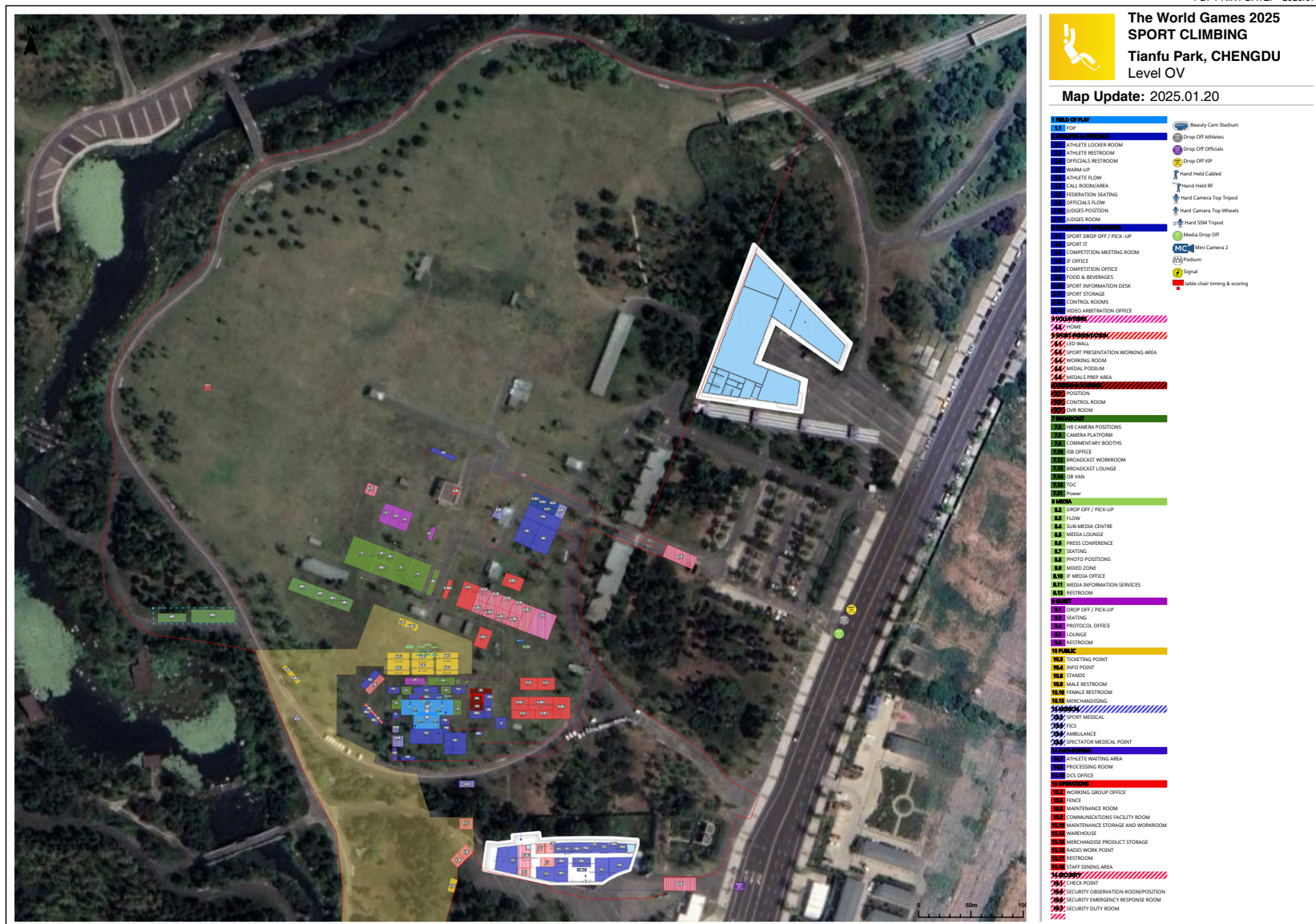
The warm-up area is located behind the Field of Play and includes both indoor and outdoor spaces. The indoor area is air-conditioned and equipped with warm-up tools such as pull-up bars and jump boxes.

The warm-up wall, located outside in the same area, is 6 meters high and 12 meters wide, equipped with auto-belay systems, along with a roof and sunshade for sun protection.

Both the Field of Play wall and the warm-up wall will be available for training on 13 August.

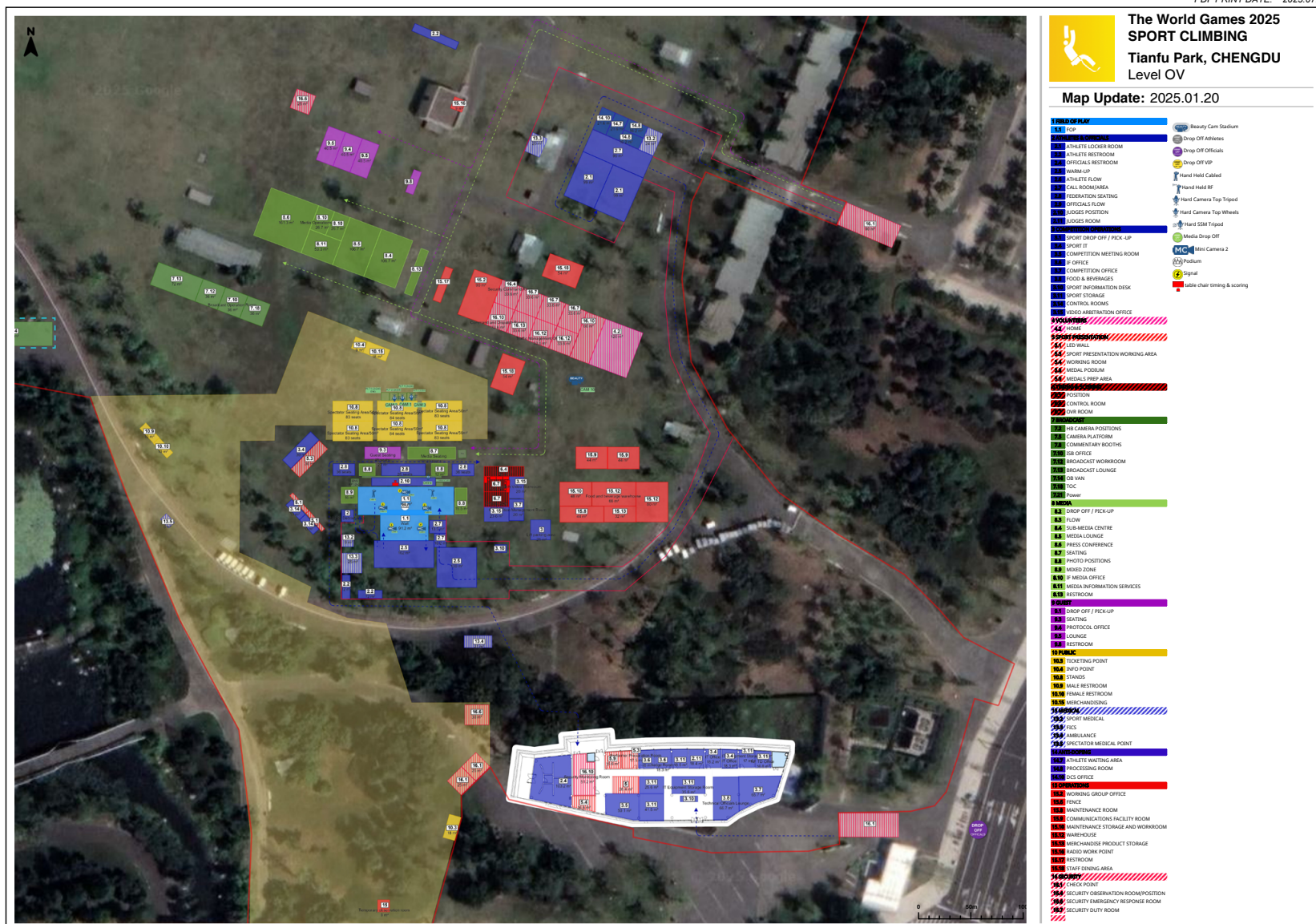


PDF PRINT DATE: 2025.07.7





PDF PRINT DATE: 2025.07.7

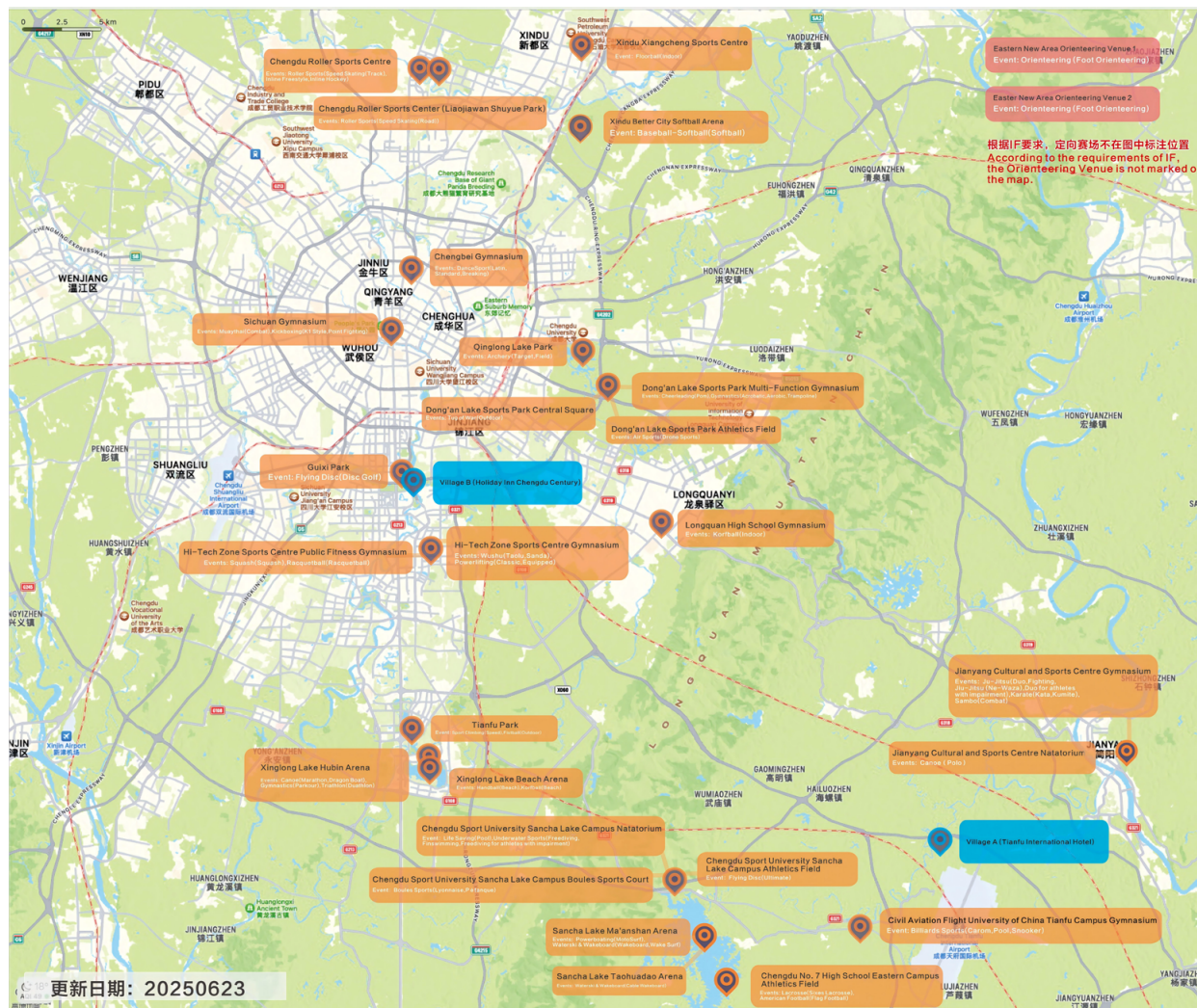


# THE WORLD GAMES 2025 CHENGDU



## 6 ANNEX

### 6.1 Location of Venues



## 6.2 Overall Competition Schedule

Table 10

Sport	Discipline	Comp Days	8.6	8.7	8.8	8.9	8.10	8.11	8.12	8.13	8.14	8.15	8.16	8.17	Venue
Air Sports	Drone Sports	3													Dong'an Lake Sports Park Athletics Field
American Football	Flag Football	4													Chengdu No.7 High School Eastern Campus Athletics Field
Archery	Field	6													Qinglong Lake Park
	Target	3													
Baseball-Softball	Softball	10													Xindu Better City Softball Arena
Billiards Sports	Carom	5													Civil Aviation Flight University of China Tianfu Campus Gymnasium
	Pool	5													
	Snooker	5													
Boules Sports	Lyonnaise	4													Chengdu Sport University Sancha Lake Campus Boules Sports Court
	Pétanque	4													
Canoe	Dragon Boat	2													Xinglong Lake Hubin Arena
	Marathon	2													
	Polo	4													
Cheerleading	Pom	2													Dong'an Lake Sports Park Multi-Function Gymnasium
DanceSport	Breaking	2													Chengbei Gymnasium
	Latin	1													
	Standard	1													Tianfu Park
Futsal	Outdoor	5													
Floorball	Indoor	8													Xindu Xiangcheng Sports Centre
Flying Disc	Disc Golf	3													Guli Park
	Ultimate	5													
Gymnastics	Acrobatic	3													Dong'an Lake Sports Park Multi-Function Gymnasium
	Aerobic	2													
	Parkour	2													
	Trampoline	3													
Handball	Beach	6													Xinglong Lake Beach Arena
Jiu-Jitsu	Duo	2													Jianyang Cultural and Sports Centre Gymnasium
	Duo for athletes with impairment	1													
	Fighting	2													
Karate	Kata	1													Jianyang Cultural and Sports Centre Gymnasium
	Kumite	2													
Kickboxing	K1 Style	3													Sichuan Gymnasium
	Point Fighting	3													
Korfball	Beach	3													Xinglong Lake Beach Arena
	Indoor	5													Longquan High School Gymnasium
Lacrosse	Sixes Lacrosse	5													Chengdu No.7 High School Eastern Campus Athletics Field
Life Saving	Pool	2													Chengdu Sport University Sancha Lake Campus Natatorium
Muaythai	Combat	3													Sichuan Gymnasium
Orienteering	Foot Orienteering	3													Eastern New Area Orienteering Venue 1 & 2
Powerboating	MotoSurf	3													Sancha Lake Ma'anshan Arena

Sport	Discipline	Comp Days	8.6	8.7	8.8	8.9	8.10	8.11	8.12	8.13	8.14	8.15	8.16	8.17	Venue
Powerlifting	Classic	2													Hi-Tech Zone Sports Centre Gymnasium
	Equipped	2													
Racquetball	Racquetball	5													Hi-Tech Zone Sports Centre Public Fitness Gymnasium
Roller Sports	Inline Freestyle	2													Chengdu Roller Sports Centre
	Inline Hockey	5													
Speed Skating	Speed Skating	4													Jianyang Cultural and Sports Centre Gymnasium
	Speed Skating	4													
Sambo	Combat	2													Jianyang Cultural and Sports Centre Gymnasium
Sport Climbing	Speed	3													Tianfu Park
Squash	Squash	5													Hi-Tech Zone Sports Centre Public Fitness Gymnasium
Triathlon	Duathlon	3													Xinglong Lake Hubin Arena
Tug of War	Outdoor	3													Dong'an Lake Sports Park Central Square
Underwater Sports	Finswimming	2													Chengdu Sport University Sancha Lake Campus Natatorium
	Freediving	2													
Waterski & Wakeboard	Cable Wakeboard	3													Sancha Lake Taohuadiao Arena
	Wake Surf	3													Sancha Lake Ma'anshan Arena
Wushu	Wushu	3													Hi-Tech Zone Sports Centre Gymnasium
	Taolu	2													

## 6.3 Sponsors






  
 2025年第12届世界运动会全球合作伙伴  
 TWG 2025 Chengdu Global Partner

# 特步冠军版跑鞋家族

「加速度配色」



160X 6.5 PRO



160X 6.5



260X 2.0



360X 2.0



360X 2.0 LITE



微信扫一扫

特步冠军家族

源自打破中国马拉松纪录的160X

\*数据来源于：2014年中国田径协会官方网站——2014年9月24日特步160X 3.0 PRO助力陈学顺打破中国男子马拉松纪录。北京  
 160X为特步160X系列跑鞋（含160X、160X 2.0、160X PRO、160X 3.0、160X 3.0 PRO、160X 3.5 PRO、160X 5.0、160X 5.0 PRO、160X 6.0、160X 6.0 PRO、160X 6.0 MONSTER、160X 6.5、160X 6.5 PRO）

# PANDA ROUTE UNITE THE WORLD

熊猫之路 连接世界



第12届世界运动会全球合作伙伴  
TWG 2025 Chengdu Global Partner



**TISSOT**  
SWISS WATCHES SINCE 1853



TISSOT PRC100 SOLAR  
天梭聚光系列腕表

精品店：巴黎—伦敦—纽约—北京—中国香港—新加坡—新德里—迪拜—莫斯科—苏黎世  
产品咨询电话：北京 (010) 5763 3189 上海 (021) 2412 5114 广州 (020) 6660 4092 沈阳 (024) 2358 9833  
售后服务热线：400-670-1853 购买时请到天梭官方授权零售商店及天梭在线精品店

TISSOTWATCHES.CN



扫一扫 探索更多

THE WORLD GAMES 2025 CHENGDU 中国电信 CHINA TELECOM  
2025年第12届世界运动会官方合作伙伴  
Official Partners Of The World Games 2025 Chengdu



2025年第12届世界运动会官方合作伙伴  
Official Partners Of The World Games 2025 Chengdu



## 中国「安全+数智」一体化领导者

使命：护航产业互联

愿景：护航产业互联



云网安一体化



数据驱动 AI原生



空天地全栈安全

### 入选国际权威机构报告



Gartner

获推荐  
28次

IDC

获推荐  
37次

沙利文

获推荐  
11次

### 国内权威机构背书

CAICT 中国信通院

CCID 赛迪顾问

获推荐  
56次



安全牛

歌识安全

荣誉和奖项  
21个

### 网络安全重要力量



国家级网络安全应急服务支撑单位  
国家信息安全漏洞库CNNVD技术支持单位  
国家重大活动网络安全保卫技术支持单位  
国家计算机病毒应急处理中心技术支持单位  
国家网络与信息安全信息通报机制技术支持单位  
中国互联网网络安全威胁治理联盟成员单位  
工业信息安全监测应急支撑单位

### 护航国家重大活动

全国两会 2019年-2023年	党的二十大 2022年	中国共产党第二十次全国代表大会 2022年	北京冬奥会 2022年	博鳌亚洲论坛 2017年	第十届中国国际进口博览会 2021年
博鳌亚洲论坛 2018年	博鳌亚洲论坛 2019年	博鳌亚洲论坛 2020年	博鳌亚洲论坛 2021年	博鳌亚洲论坛 2022年	博鳌亚洲论坛 2023年
博鳌亚洲论坛 2024年	博鳌亚洲论坛 2025年	博鳌亚洲论坛 2026年	博鳌亚洲论坛 2027年	博鳌亚洲论坛 2028年	博鳌亚洲论坛 2029年

### 市场份额 领先



网络安全软件  
网络安全电信行业  
身份和数字信任软件  
统一身份管理平台

### 技术领导厂商

终端安全  
威胁情报  
安全运营  
云安全  
身份安全

数据安全  
态势感知  
勒索治理  
XDR



# 领克 900

## 智享百变 旗舰大六座SUV

# 大·敢不同



了解更多

运动无限 吉利同行  
Boundless Sports, Drive With Geely

THE WORLD GAMES 2025 CHENGDU

吉利控股集团

2025年第12届世界运动会官方合作伙伴  
Official Sponsors Of The World Games 2025 Chengdu



人民保险 服务人民

The People's Insurance Company of China



运动无限  
气象万千

2025年第12届世界运动会  
社交媒体类官方赞助商





CCTV 5 体育 CCTV 5+ 体育赛事 广告总代理 智扬体育 以智扬名 以体育美

- 中央广播电视总台AAAA级广告代理公司
- 中国一级广告企业
- 中国广告长城奖-年度广告公司
- 中国品牌战略营销资源平台
- IAA国际广告协会成员单位



2025年第12届世界运动会官方赞助商  
Official Sponsors Of The World Games 2025 Chengdu

绿色发展 | 奉献能源

PURSUIING  
GREEN DEVELOPMENT  
AND PROVIDING  
RELIABLE ENERGY



中国石油



WORLD GAMES



TWG 2025 CHENGDU

2025年第12届世界运动会官方赞助商  
Official Sponsors Of The World Games 2025 Chengdu






  
 2025年第12届世界运动会官方饮用水  
 Official Drinking Water Of The World Games 2025 Chengdu

水中贵族 **百岁山**



官方微信公众号



官方微博



全球合作伙伴  
Global Partner



官方计时器  
Official Timekeeper



官方赞助商  
Official Sponsor



官方独家供应商  
Official Exclusive Supplier



官方供应商  
Official Supplier



指定类别产品/服务/平台  
Designated Category Product/Service/Platform

海之言

统一企业

拉面范

康师傅冰红茶

金典

成都银行

成铁川之味公司

三叶家具

汇源果汁

成铁传媒

**运动无限 气象万千**  
*Boundless Sports, Countless Wonders*

